

SFL1

SEQUENCE FLASH LIGHT



SFL1 : SEQUENCE FLASH LIGHT
RTL1: RUNWAY THRESHOLD IDENTIFICATION LIGHT

Compliance with standards

ICAO : Annex14 Para 5.3.4

FAA : AC 150/5345-51, L-849

K S : KS W 5041(Korean Standard)

The SFL1 is a high intensity capacitor discharge light to be used in Sequence Flashing lighting system or in Runway Threshold Identification lighting system. It is adjustable to three light intensity levels depending on atmospheric conditions. The complete fitting consists of a light head housing the optical components, the light body support for mounting on a 60mm outside diameter stem, the power supply box housing all the electronic components and the junction box. A master timer cabinet is used to activate the timing for the sequence-flashing signal.

Features

- Light body made of die cast aluminium
- Simple and reliable electronics
- Three energy levels
- Choice of several mounting systems for ground mounting, pole mounting or installation on frangible approach structures
- Light weight



SFL1

SEQUENCE FLASH LIGHT



SFL1-FH
SFL1-PS

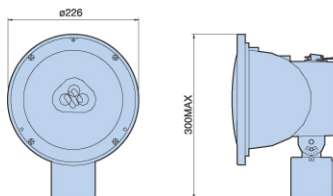


SFL1-MT

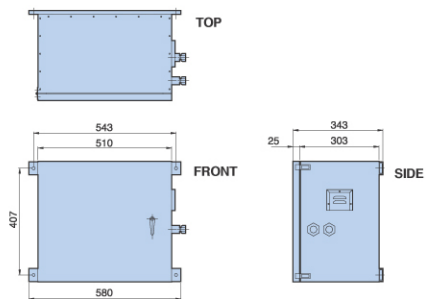
Design

Unit: mm

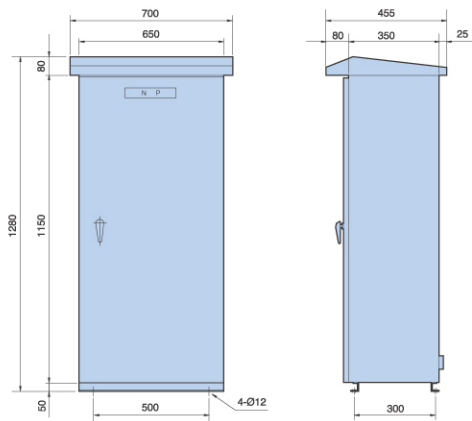
FLASH HEAD



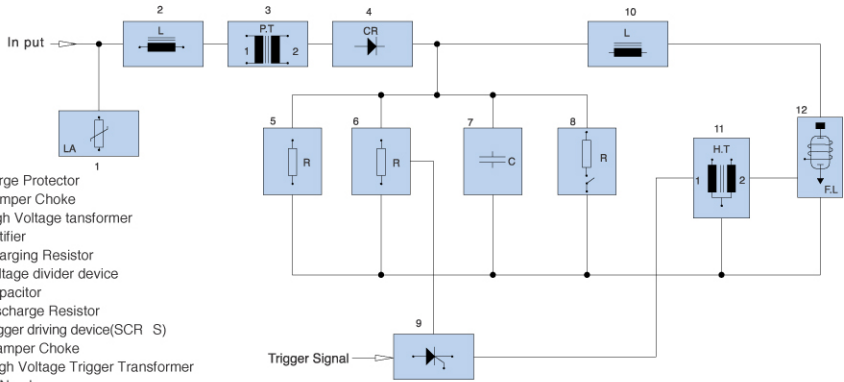
POWER SUPPLY



MASTER TIMER



Power supply & flash light block diagram



Component

Master timer



● MASTER TIMER

- In put : Single Phase 110V, 220v 50/60hz (Other voltage option)
- Out put ▶ Power: Single Phase 3 Wire 110/220V 50/60hz
 - ▶ Intensity control: 2 Wire (medium, high)
 - ▶ Trigger signal: 7, 21, 30 wire
- Power Consumption ▶ 7 Light : 1,050W ▶ 21 Light : 3,150W
 - ▶ 30 Light : 4,500W
- Intensity Control: 3 Level
- Flash time: 2 flash/sec
- Temperature range: -20 ~ 55 deg
- Humidity range: 10 ~ 95 %
- Operating condition: out door condition

Power Supply

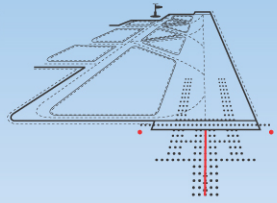


● POWER SUPPLY

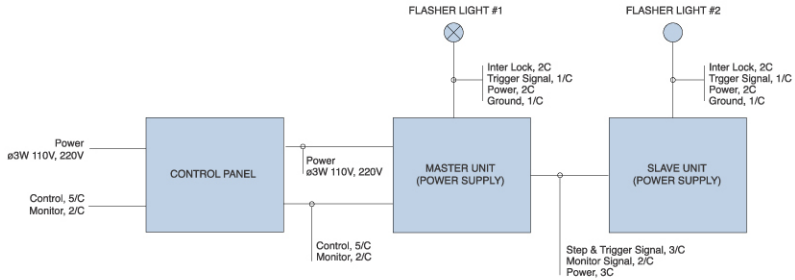
- In put ▶ Power: Single Phase 3 Wire 110V, 220 50/60Hz
 - ▶ Intensity control: 2 Wire (medium, high)
 - ▶ Trigger signal: 1 wire
- Out put ▶ Power: DC 2,000V ▶ Trigger: 300V Pulse Signal
- Power Consumption: 150W max
- Inter lock switch
- Temperature range: -40 ~ 55 deg
- Humidity range: 10 ~ 95 %
- Operating condition: out door condition

● FLASH HEAD

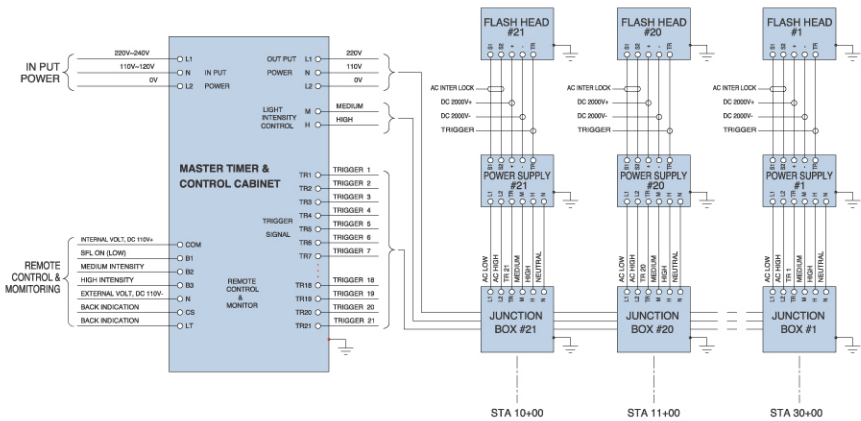
- In put ▶ Power: DC 2,000V ▶ Trigger: 300V Pulse Signal
- Inter lock switch
- Light intensity: 10,000cd Min (High level)
- Temperature range: -40 ~ 55 deg
- Humidity range: 10 ~ 95 %
- Operating condition: out door condition



RTIL Wiring Diagram

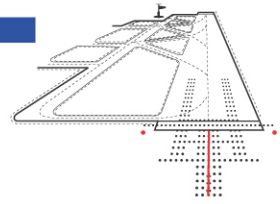


SFL Wiring Diagram



SFL1

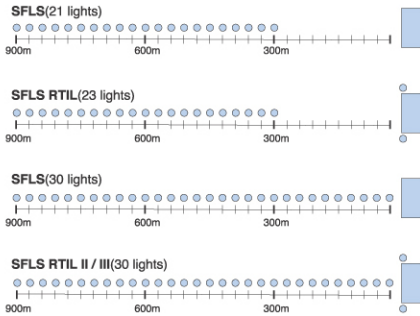
SEQUENCE FLASH LIGHT



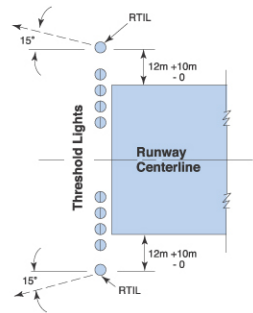
System Configuration

Unit: m

SFLS



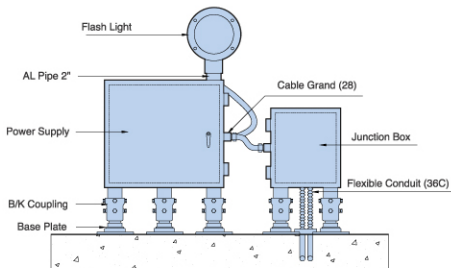
RTIL



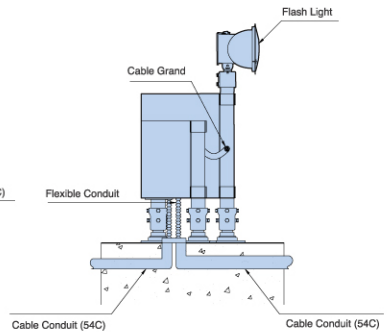
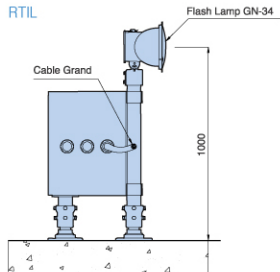
Typical Mounting System

Unit: mm

SFLS



RTIL



Ordering Code

S **F** **L** **1** - **F** **L**

Model Name

SFL1-FL: Flash Light

PS: Power Supply

MT: Master Timer

JB: Junction Box

RTL1-FL: Flash Light

PS: Power Supply

CB: Control Box

JB: Junction Box

Description

Model Name	Item
SFL1-FL	Flash Lights
SFL1-PS	Power Supply
SFL1-MT	Master Timer
SFL1-JB	Junction Box
RTL1-FL	Flash Lights
RTL1-PS	Power Supply
RTL1-CB	Control Box
RTL1-JB	Junction Box

Spare Parts

Description	Specification	Ordering code
Capacitor	AC660V 0.5 μ F	126-314A
Capacitor	AC660V 1 μ F	126-316A
Capacitor	AC660V 10 μ F	126-315A
Capacitor	AC660V 20 μ F	126-317A
Diode	BD-01	411-018A
Resistor	200W 500 Ω	125-020A
Resistor Board	CDM-1101	911-195A
Transformer	220V / 1460V 500VA	411-016A
Fuse	250V 4A	126-379A
Micro Switch	VAP-10AIR13C	123-150A
Master Control PCB	SFMT-21CCT	122-033A
Fuse	550V 60A	126-371A
Fuse	550V 30A	126-367A
Varister	CDM-2001	122-043A
Flash Lamp	FT34HP HVI-734QF/PAR56(AMGLO)GN34	111-453A