

ILC_{6mm}

INSET OMNIDIRECTIONAL LOW INTENSITY LIGHT
(PROTRUSION: 6mm)



ILC-TEDL : INSET OMNIDIRECTIONAL TAXIWAY EDGE LIGHT

Compliance with standards

ICAO : Annex14 Para 5.3.16

IEC : 61827

FAA : AC 150/5345-46, L-852T

K S : KS W 5011(Korean Standard)

The ILC light has been developed using the latest technology available. It is part of a complete range of inset lights covering all the current applications of airfield lighting. The ILC & IMA is suitable for taxiway edge, apron edge and heliport lighting.

Features

- Low protrusion above the ground(only 6mm)
- Body Forging made of aluminium alloy for lightness, mechanical strength and durability
- Environmental friendly materials
- Lens mounted to the upper cover with use of replaceable gaskets to facilitate replacement by maintenance personnel
- Smooth sloped upper surface
- Low Power consumption (40W 6.6A lamp)
- Long lamp life 1000 hours at full brilliancy
- Direct mounting on 8" shallow base with only two screws
- Mounting on standard 12" shallow base deep bases through specific aluminium adaptor ring
- Air Valve included for watertightness testing after maintenance

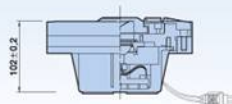
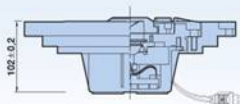
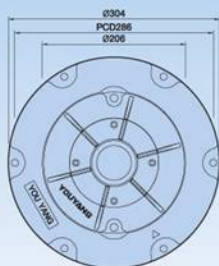


YOUYANG

AIRPORT LIGHTING EQUIPMENT INC.

ILC

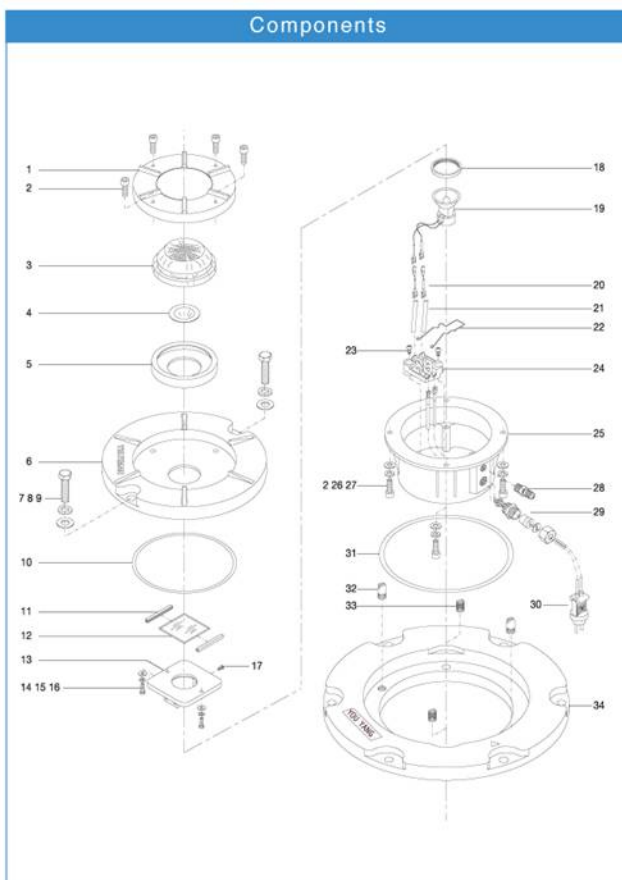
INSET OMNIDIRECTIONAL LOW INTENSITY LIGHT

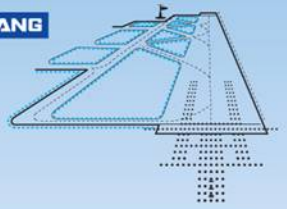


Unit: mm

1. Dome lens cover
2. Bolt(Wrench)
3. Dome lens
4. Cone mirror
5. Lens packing
6. Upper cover
7. Bolt
8. Spring washer
9. Plate Washer
10. O ring
11. Filter packing
12. Color filter
13. Lamp support
14. Bolt(turss)
15. Spring washer
16. Plate Washer
17. Bolt(truss)
18. Lamp packing
19. Halogen lamp
20. Wire
21. Silicone tube
22. Lamp spring
23. Bolt(2ea cutting)
24. Terminal block
25. Lower cover
26. Spring washer
27. Plate Washer
28. Check valve
29. Cable connector
30. Plug
31. O ring
32. Positional pin
33. Helicoil
34. Adapter ring

Components



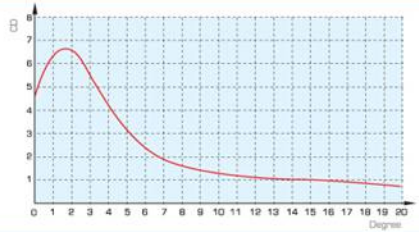


Photometric Performance

► Taxiway Edge Light

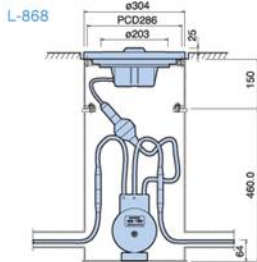
Color	Angle		Lamp	FAA Intensity	Minimum Intensity
	V	H			
Blue	0-6°	360°	40Wx1	2cd	2.5cd

- Chromaticity
- Blue X:0.2105, Y:0.1316

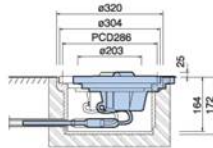


Typical Mounting System

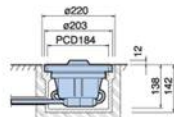
Unit: mm



12" Shallow Base

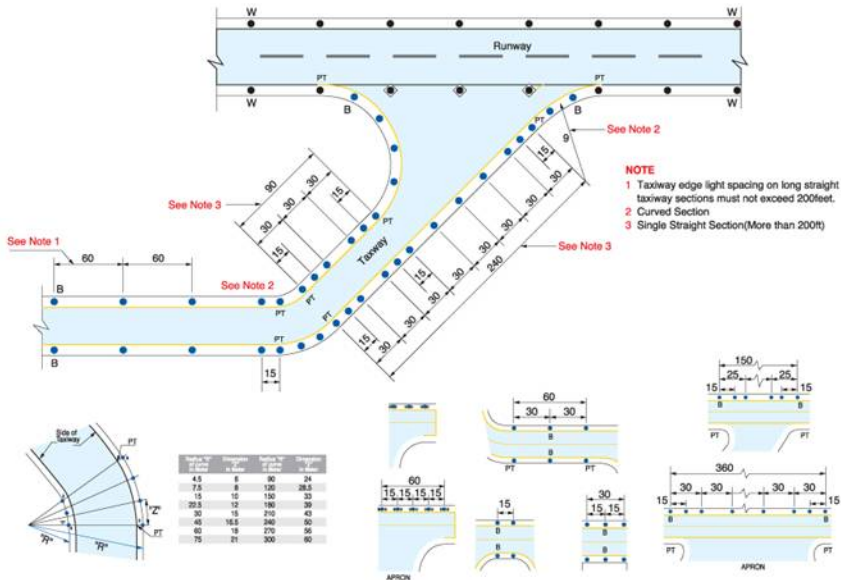


8" Shallow Base



Lighting Layout Information

Unit: m



Ordering Code

I L C - T E D L - 1 - 0 4 0 - 0 1

Model Name ILC-TEDL

Size 1: 8" 2: 12"

Lamp Wattage 040-6 6A 40W(MR-11)

Light Color 01: Blue 02: Yellow

Description

Model Name	Item	Specification
ILC - TEDL	Taxiway Edge Light	6.6A 40W x 1 Blue
	Taxiway Edge Light	6.6A 40W x 1 Yellow

Spare Parts

Description	Specification	Ordering code
Upper Cover	Taxiway Edge Light	911-048F
Lower Cover	1 Lead	Z141100
Prism	6mm	142-033B
Color Filter	Blue	143-073A
	Yellow	143-052A
Lamp	6.6A 40W, MR-11	111-200A



YOUYANG

AIRPORT LIGHTING EQUIPMENT INC.

Head Office

738-2, Kwanyang-Dong, Dongan-Ku,
Anyang City, Kyunggi-Do, Korea

Tel : 82-31-422-0021

Fax : 82-31-424-6044

http://www.youyang.co.kr

E-mail: youyang@youyang.co.kr